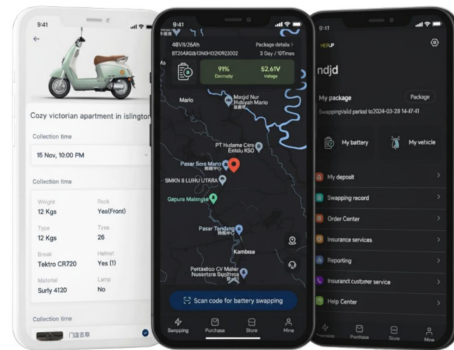


# ScapePhoton

Where Energy Flows, Innovation Follows.

# An integrated solution for "Vehicle+Battery+Swappable Cabinet Station"



- **Integrated Solutions**

Vehicles+batteries+cabinets,software+hardware.

- **High Success Rate**

99.96% battery swapping success.

- **Wide Compatibility**

Supports over 95% of lithium batteries.

- **Centralized SaaS Platform**

SaaS solution for integrated management of electric motorcycles, lithium batteries, and swapping cabinets, all managed seamlessly from one platform.

- **Data Connectivity**

Ensures stable operations through interconnected data management.

- **High-Performance Batteries**

Features A grade, high-rate lithium batteries with bottom connection solutions for optimal performance.

## Li-ion Battery



### Designed for High Performance Applications

- High Speed E-Motorcycle: >80 km/h
- Long Range Capability: >100 km
- High Performance Battery with Customizing Capability
- Smart BMS+IoT Device and Real-time Monitoring

# Swappable Cabinet Station

10



- **Compatible Battery**

48V50AH/48V60AH/60V30AH/60V50AH/72V30AH/72V60AH etc.

- **Applicable**

Light Electric motorcycles, Electric motorcycles

- **Link Up to 5 Cabinets**

Supports connection of up to 5 cabinets for enhanced operational efficiency.

- **Stability**

Offline Bluetooth/verification swapping, Reverse power supply for swapping during outages, 99.94% swap success rate.

- **Versatile Battery Support**

Compatible with 48V, 60V, and 72V lithium batteries, catering to a wide range of electric vehicle applications.

- **Comprehensive Security**

Electromagnetic locks, battery tracking, real-time location monitoring, fire alarm, IP54 protection.

- **User-Friendly Maintenance**

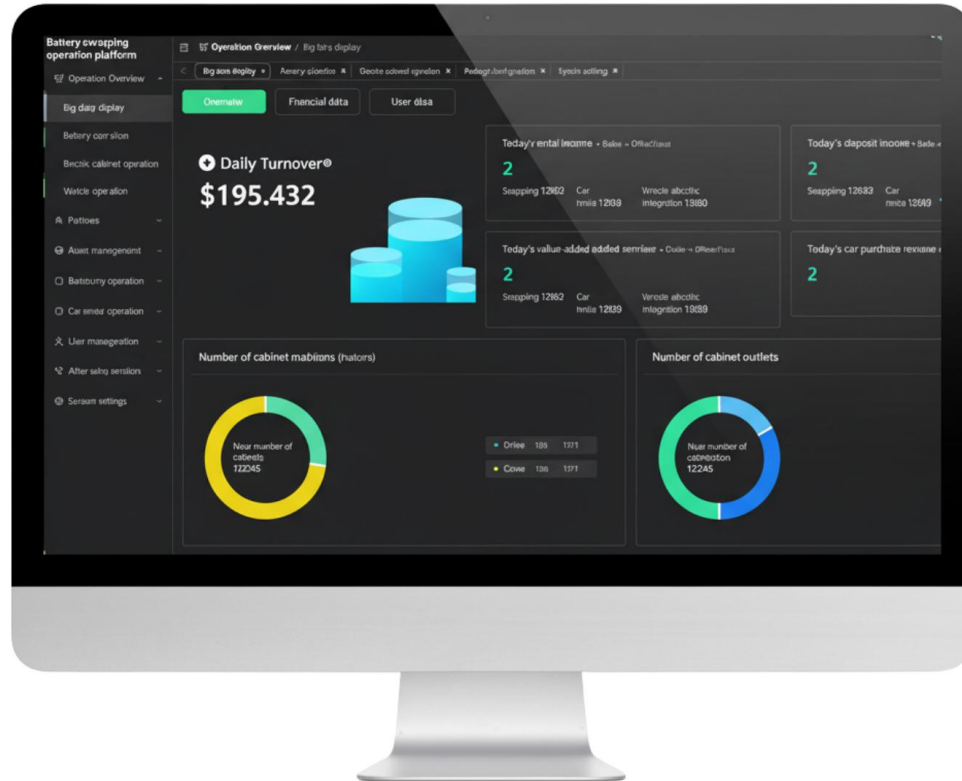
maintenance access, visual meters for monitoring, OTA upgrades, Mobile App-based monitoring.

- **Personalized Design**

Offers customizable exterior designs to meet specific branding and aesthetic requirements.



# Software Service Platform



- **Asset Management**

Efficient tracking and inventory of vehicles, batteries, and swapping cabinets.

- **Data Analysis**

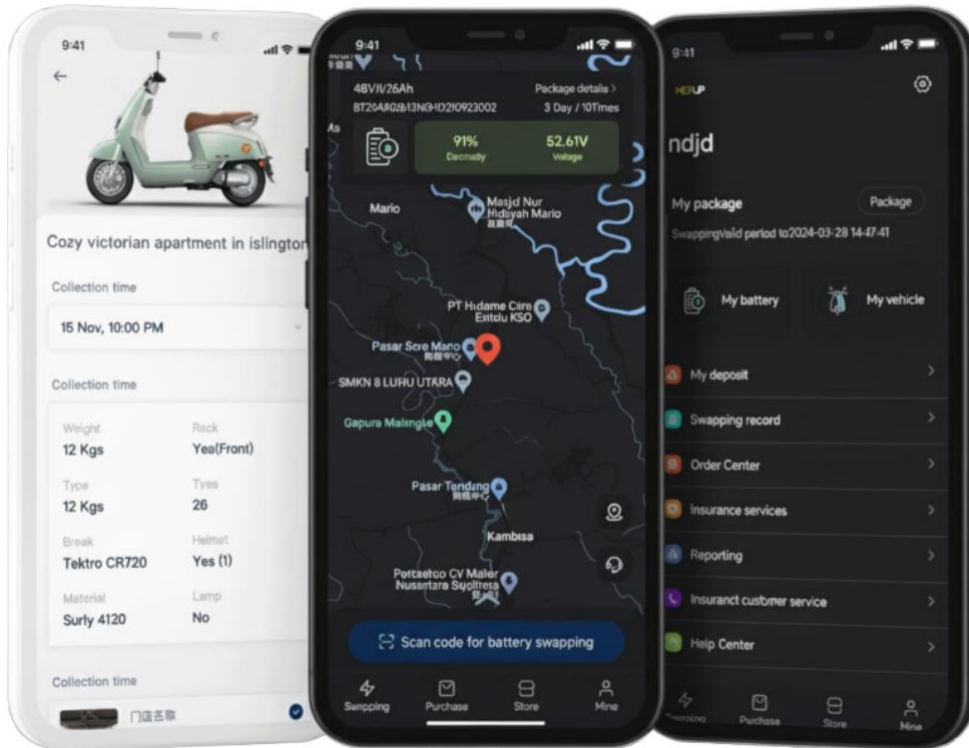
In-depth analysis of operational revenue and financial statistics for informed decision-making.

- **Operation Management**

Diverse billing features, comprehensive order records, user data analysis, and real-time device status updates.

# User APP

# 12



- **One-Stop Solution**

Rent vehicles and batteries, and swap batteries all in one integrated platform.

- **Real-Time Battery Monitoring**

Access live data on battery status for informed usage decisions.

- **Smart Navigation**

Track running routes and easily navigate to nearby swapping stations with one-click access.

- **Streamlined Swapping**

Simplified operations with QR code scanning for quick battery swaps.

- **Reservation System**

Schedule and reserve swapping slots for a hassle-free experience.

- **Mobile Wallet**

Convenient options for deposits and withdrawals, enhancing user financial management.

- **Online Support**

Immediate access to customer service for quick assistance with any issues.

# Thanks for Your Attention!

Where Energy Flows, Innovation Follows.